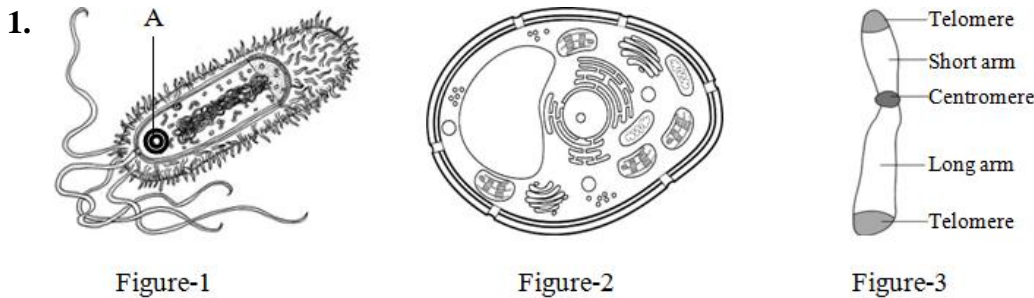
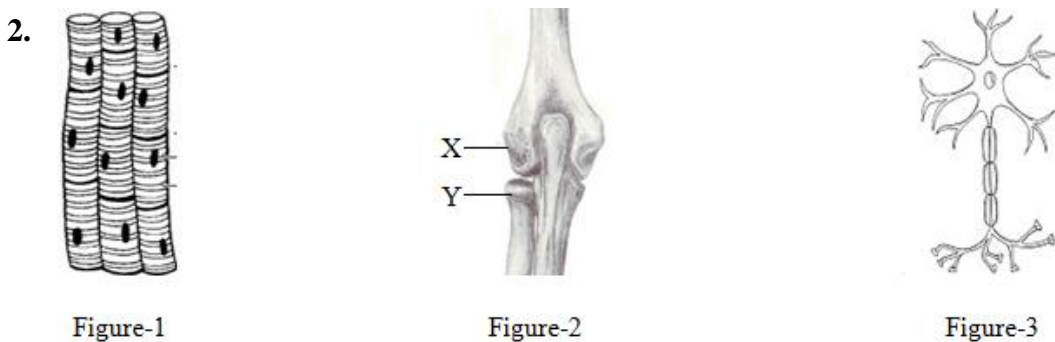


PART-A: CREATIVE QUESTIONS

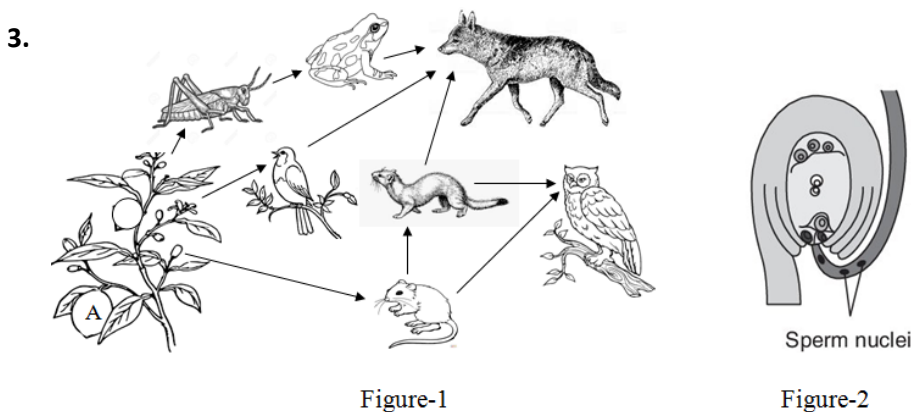
Observe the stems and write down the answer of the following creative questions.



1.
 - a) What is 'A' marked part of figure-1? *
 - b) Which organelle of figure-2 is called power house and why? **
 - c) Explain how figure-1 is different from figure-2. ***
 - d) Figure-3 in father determines the sex of a baby.—Analyze with logic. ****



2.
 - a) From where is figure-1 originated? *
 - b) Write the differences between the cell of figure-1 and figure-3. **
 - c) Explain how friction is reduced between X and Y marked part of figure-2. ***
 - d) Coordination among figure-1, figure-2 and figure-3 helps in the movement and locomotion of the body of human being.—Analyze. ****



3.
 - a) How many food chains are there in figure-1? *
 - b) Why are decomposers called transformers? **
 - c) Explain the flow of energy through one of the largest food chains of figure-1. ***
 - d) 'A' of figure-1 is the result of the process of figure-2.—Analyze. ****

PART-B: SHORT QUESTIONS

Write down the answer of the following questions in one word.

- 1) Which branch of biology discusses about the origin of life and its gradual development?
Ans:
- 2) In which organelle does the hydrolysis of enzymes take place?
Ans:
- 3) Where is chromonemata found? In—
Ans:
- 4) Write down the name of an epithelial tissue which is found in hydra.
Ans:
- 5) Where is fibroblast found? In—
Ans:
- 6) Where is myofibril found? In—
Ans:
- 7) How many chromosomes are there in a primordial germinal cell of a male person?
Ans:
- 8) What is the name of the membrane which encloses the bone?
Ans:
- 9) Which hormone accelerates the shedding of the leaf, flower and fruit?
Ans:
- 10) What type of neuron is present in the gray matter of spinal cord?
Ans:
- 11) Suppose, the distance between your finger and the spinal cord is 70 cm. If a pin suddenly enters into your finger, how long will your hand take to move away automatically?
Ans:
- 12) Which endocrine glands are located at the top of the main organs of excretory system?
Ans:
- 13) What does the unit of nervous system produce that helps in muscular movement?
Ans:
- 14) By which process of cell division are microspores produced?
Ans:
- 15) When does the first division of zygote start after fertilization?
Ans:
- 16) Write down the name of an embryonic membrane which protects the fetus.
Ans:
- 17) What is the basic unit of DNA?
Ans:
- 18) What is the radius of twisted helical structure of DNA everywhere?
Ans:
- 19) Algae → Larva of mosquito → Small fish → Bhetki. If algae capture 200 kilocalories energy, how much energy will the Bhetki get?
Ans:
- 20) What is the name of the kingdom of the organism which lives in the nodule of leguminous plant?
Ans: